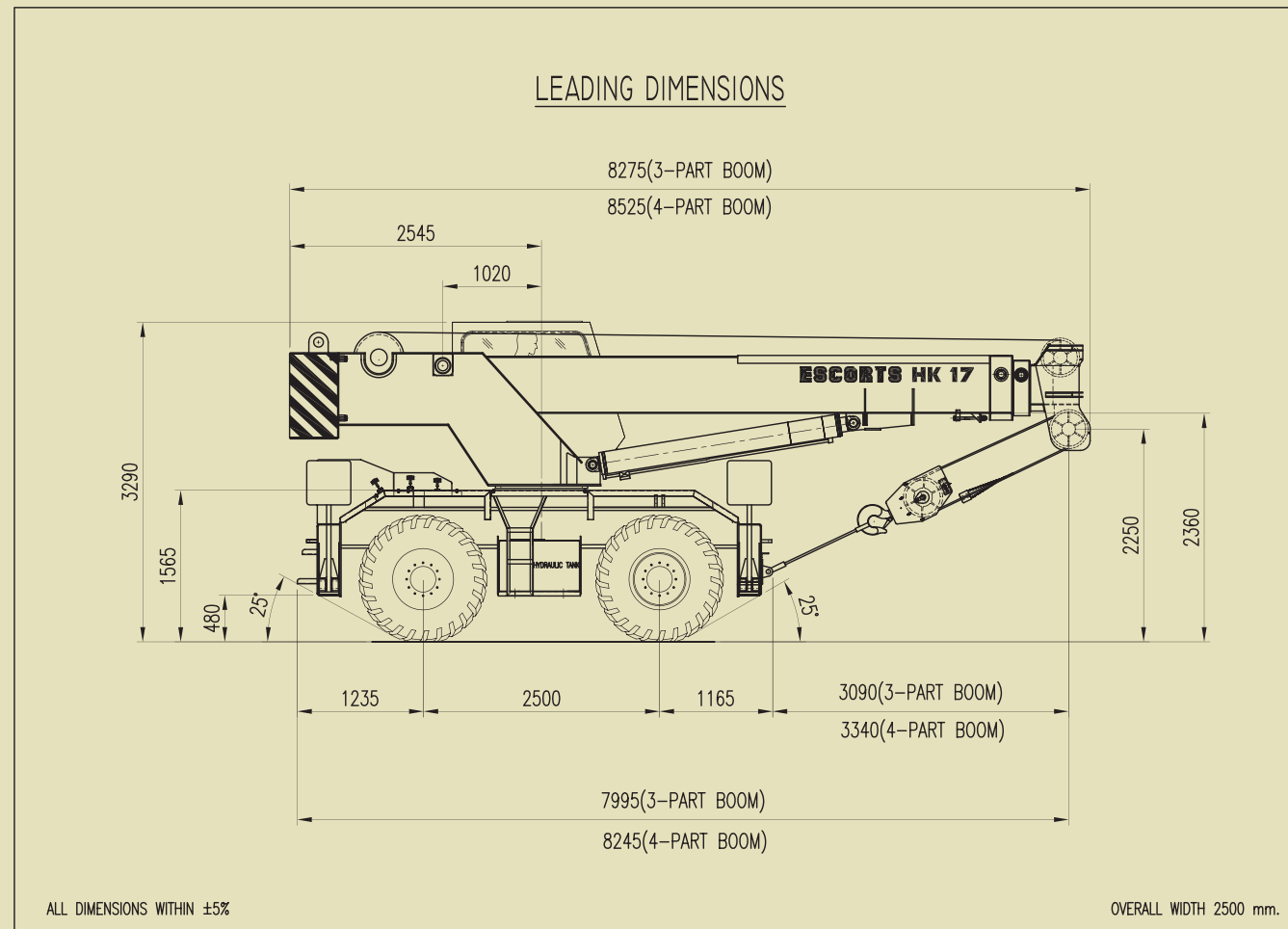


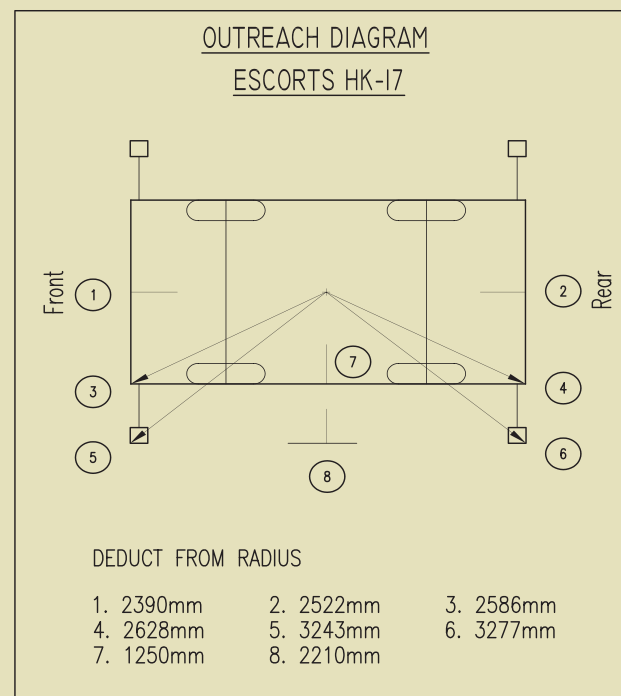


# ESCORTS HK 17

Rough Terrain Hydraulic Mobile Crane



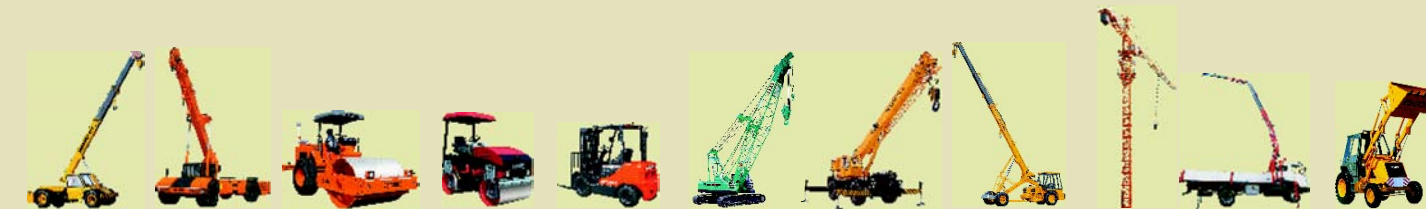
Business Centres	Phone	Fax
Ahmedabad	079-40063445	079-40063445
Bangalore	080-23398809 080-23398812	080-23396342
Bhopal/Indore	0755-2551955 9826824111	0755-2551955
Bhubaneswar	0674-2588775 0674-2588627 0674-2588874	0674-2585627
Chandigarh	0172-5017995	0172-5017995
Chennai	044-42153710 044-42153707	044-42153715
Guwahati	0361-2733246	
Jaipur	0141-2760904 0141-5149433	0141-2760904
Kolkata	033-24862027 033-24862028	033-24863848
Lucknow	522-4003683	522-2371901
Mumbai	022-24218150 24218151 24218160, 24218161	022-24218153
Nagpur	0712-6450713	2567221
New Delhi	011-26444821 26444873	011-26444873
Pune	020-40089771	020-40089772
Ranchi	0651-2531340	0651-2531187
Secunderabad	040-27842451	040-27842441
Visakhapatnam	0891-2563235 0891-2504875	0891-2560052



**AXLE LOADS (Kgs) ESCORTS HK-17**

	3 Part Boom 6.46-15.0 M	4 Part Boom 6.7-19.50 M
FRONT AXLE	9970 Kgs.	9770 Kgs.
REAR AXLE	11870 Kgs.	12830 Kgs.
TOTAL WEIGHT	21840 Kgs.	22600 Kgs.

ALL DIMENSIONS and Weights WITHIN ±5%



## Escorts Construction Equipment Limited

Plot No.219, Sector- 58, Ballabhgarh, Distt. Faridabad-121004, Haryana, India  
Tel: 0129-2306582/2306569, Fax: 2306566, Toll Free No.: 1800- 180- 1890  
E-mail: marketing@escorts-ecl.com, Website: www.ecl.com

LIT/MKTG/HK 17/11-11



• **Maximum Capacity**  
18 MT AT 2.5M Radius on Outriggers 360° Slew

• **Maximum Capacity**  
10.3 MT M 2.5 M Radius on Tyres Over front

• **3 Part 15 M Boom**  
(Optional 4 Part 19.5 M Boom)

• **4x4 Wheel Drive with 4-wheel steer**

### Option (HY 17)

• **4x2 Wheel Drive with 2-wheel steer**

# Technical Data

## Technical Data

### CRANE UPPER

#### Superstructure Frame

- All welded rigid structure

#### Telescopic Boom

- 3 part, 1 base and 2 telescopic elements with synchronized movement, fully powered.
- Overall length: retracted - 6.46 m; extended - 15.0 m
- Timing (un-laden) 'out' 39 sec; 'in' 37 sec

#### Boom Derrick

- 1 differential cylinder with integral lowering brake valve. Angle of elevation -1° to 72° Timing (un-laden) 'out' 21-23 sec; 'in' 22-25 sec

#### Hoisting

- Gear motor, hoisting gear drum with built-in hydraulically controlled spring loaded multiple disc brake
- Rope dia - 16 mm, rope length - 125m
- Max rope speed, un-laden 55m/min on the third layer

#### Ring Gear Assembly

- Single ball bearing slew ring with external gearing, fitted between carrier and superstructure. Continuous infinite 360° rotation

#### Driver's Cabin

- One-man revolving cab, sheet-metal structure, large-sized safety glass windows, adjustable driver's seat, top-glass lifting type, rear emergency exit window, sliding door, wipers, ventilating fan, cab light, instrument panel with rpm/ hour meter, fuel gauge, water temperature gauge, hydraulic pressure gauge, air pressure gauge, speed selector, crane controls, safe load system with audio-visual indication of safe/ overload, starter switch with key, combination switch for head light and horn, crane levelling gauge, parking brake lever, foot brake and throttle

#### Slewing Gear Drive Assembly

- Hydraulically driven planetary gear box including spring loaded hydraulically released multiple disc brakes
- Slewing speed, un-laden 0 - 3.0 rpm

#### Safety Device

- Safety valves for protection against pipe or hose ruptures. Winch over hoist limit switch, automatic hydraulic cut-off in case of over loading, slew locking during travel, auto steer reversal, safety - latch in hook

### CRANE LOWER

#### Chassis

- The chassis is a torsion resistant and rigid steel structure of side member construction

#### Outriggers

- 4 nos. wing type outriggers operated through hydraulic cylinders fitted with dual pilot lock valves for total safety

#### Engine

- Suitable water cooled diesel engine of adequate HP. Fuel tank capacity of 160 Ltrs

## Technical Data

### Gear Box

- Power shift gear box with adequate forward and reverse speeds

### Drive Configuration

- 4x4 • 4x2 (HY-17)

### Axle

- Front: Drive & Steer • Rear: Drive & Steer
- Front: Non Drive & Non Steer • Rear: Drive & Steer (HY-17)

### Axle Suspension

- Front: Centrally suspended with lateral oscillation, hydraulic axle locking assembly
- Rear: Bolted to the frame

### Hydraulic System

- Hydraulic system using double gear-pump driven through transmission and steer pump through engine
- Service pressure of hydraulic system: 175 bars
- Hydraulic tank capacity-300 ltrs

### Control valves

- 4 Bank-valves, operated through hand lever / joystick

### Brake

- Service - foot operated, hydraulic assisted
- Parking: hand operated, hydraulic assisted, fail-safe on rear wheels

### Tyres

- 4 Nos. 14.00x25-24PR, earth mover

### Steering

- Fully Hydrostatic with 4 steering modes: 2 wheel front, 2 wheel rear, 4 wheel coordinated & crab

### Turning Circle Dia.

- 2 wheel steer - 14.02m, 4 wheel steer - 8.68m
- 2 wheel steer - 12.8m (HY-17)

### Safe Load Indicator

- Automatic safe load indicator giving display of actual and maximum safe working load (at a particular radius) along with audible and visual warning on approach to overload and cut off

### Electrical Equipment

- 24V DC system

### Dimensions

- Wheel base 2460 mm
- Width 2500 mm

### Max. Speed

- 30 Km/hr (approx.)

### Gradient

- 1 in 2 (un-laden) • 1 in 4 (un-laden) (HY 17)

### Options

- Fly-Jib, 6.1 M • Emergency Wind-off System
- Special Lights • Cab-Heater/Demister
- Fire Extinguisher • Engine Cold Starting Kit
- High Tension Warning Device
- Spark Arrestor • Sun-Visor
- Spare Wheel • Self Recovery Winch
- 2 Part Boom : Retracted Length - 6.3 M, Extended Length - 10.62 M
- 4 Part Boom : Retracted Length - 6.7 M, Extended Length - 19.5 M
- Man Carrying Basket • Digital date recorder
- Out & Down type outriggers

# Load Chart

3 PART TELESCOPIC BOOM (6.46m - 15.0m) 85% RATING			
RADIUS (Meters)	LIFTING CAPACITY (Kgs)		
	PROPPED	FREE ON WHEELS	
	360°	360° Static	Over Front
2.0	18000	11670	11730
2.5	18000	9810	10320
3.0	16760	8240	9080
3.5	15180	6890	7800
4.0	13600	6015	6770
4.5	12090	5230	5920
5.0	10650	4610	5270
6.0	8400	3600	4090
7.0	6350	2680	3230
8.0	4750	2000	2530
9.0	4000	1650	1960
10.0	3250	1300	1550
12.0	2380	690	920
14.0	1700	-	-

4 PART TELESCOPIC BOOM (6.7m - 19.5m) 85% RATING				
RADIUS (Meters)	PROPPED 360°		FREE ON WHEELS	
	6.7m to 15.2m 4th Section Housed	11.0m to 19.5m 4th Section Extended	360° Static	Over Front
2.0	18000	-		
2.5	18000	11200	9450	9960
3.0	16760	10460	7870	8800
3.5	15180	9800	6400	7520
4.0	13600	9140	5690	6450
4.5	12090	8640	5030	5540
5.0	10560	8080	4470	4920
6.0	7870	6980	3250	3910
7.0	5990	5820	2390	3150
8.0	4670	4520	1750	2420
9.0	3740	3670	1270	1830
10.0	3050	3000	860	1420
12.0	2080	2080	-	860
14.0	1470	1470		
16.0	-	1170		
18.0	-	810		

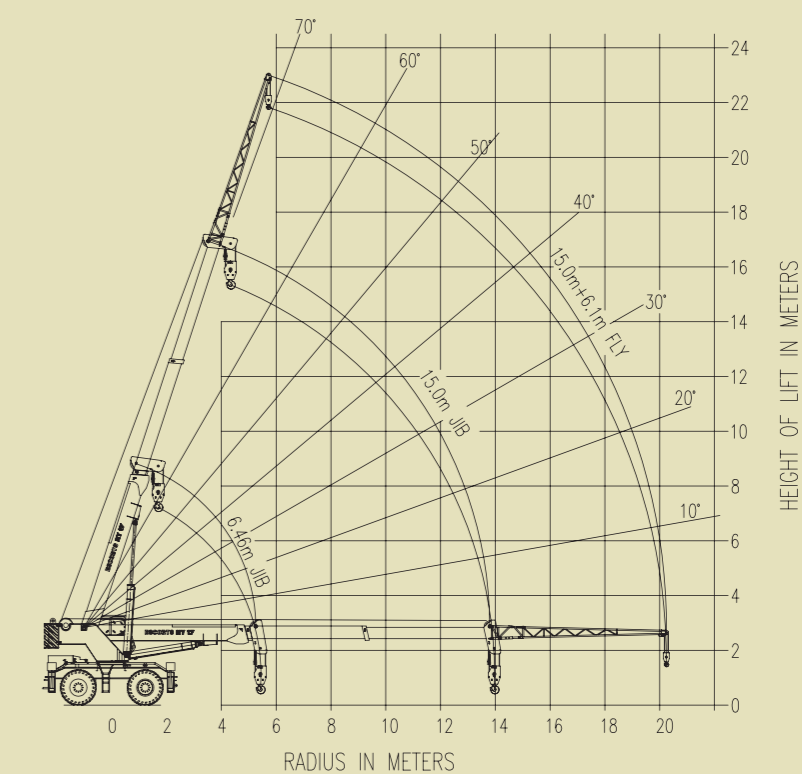
LIFTING CAPACITY WITH FLYJIB (6.1m) 85% RATING			
LIFTING CAPACITY (Kgs) PROPPED 360°	RADIUS (Meters)		
	MAIN JIB 6.7 m BOOM CENTRE 12.8 m	MAIN JIB 15.0 m BOOM CENTRE 21.1 m	MAIN JIB 19.5 m BOOM CENTRE 25.6 m
3500	4.12	6.38	7.50
3500	4.87	7.58	9.00
2950	5.39	8.41	10.00
2080	6.39	10.26	12.00
1420	7.43	11.75	14.00
1070	8.42	13.40	16.00
770	9.39	15.00	18.00

#### NOTES:-

- Rated loads are as per SAE J765 and do not exceed 85% of tipping load.
- All loads shown are in metric tonnes. Weight of hook block, slings etc. must be deducted from rated loads
- All duties are on level, firm ground. When working on outriggers, tyres must be free from the ground
- FOW (free on wheel / on tyre) duties are based on 14.00x25- 24PR, E/M tyres. Over front, max speed-5 kmph with load
- Weight of hook block for main boom = 250 kgs, for use upto 6 falls
- Weight of hook block for lattice extn. = 100 kgs, for use with single fall.

# Reach Diagram

THREE PART TELESCOPIC BOOM (6.46M TO 15.0 M)



FOUR PART TELESCOPIC BOOM (6.7M TO 19.5 M)

