

ESCORTS F 20

The **PIONEER**
in **LIFTING...**
and the legacy continues

20T Capacity

Front wheel drive machine

15T lifting through snatch block

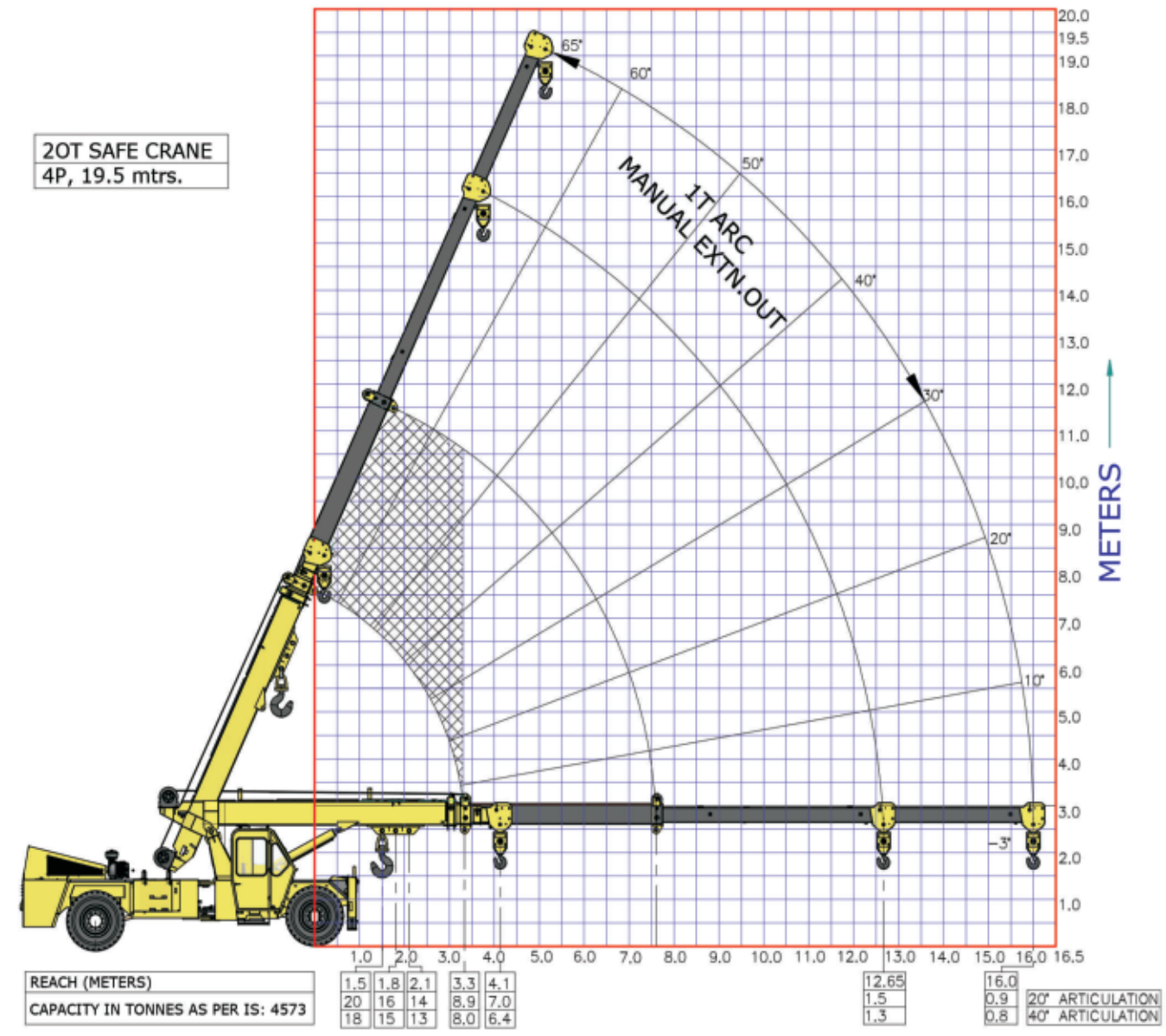
Chassis type design for enhanced stability and control

Equipment monitoring system fitment

Best in class creep speed

The information contained in this leaflet is intended to be of general nature only. We reserve the right to change specifications without notice. All dimensions and weight are variable within ± 5%.

LOAD CHART



- Use 6 Fall Rope Manual Extn 'IN' and 4 Fall Rope Manual Extn 'OUT'
- Use Outriggers for Erection Work
- 15 T Load lifting through Snatch Block in fully closed/retracted boom condition



SPECIFICATION F-20

Rate Capacity

- 20 tonne at 1.5 m radius
- 900 Kg at 16 m radius
- Max hook height 18.2 m

Vehicle Performance

- Speed 38 kmph max
- Creep Speed 1.3 kmph

Axles

- Front Rigidly mounted front wheel drive axle
- Rear Mounted with semi-elliptical springs

Engine

- Diesel engine of VOLVO Eicher make, Model E 483 TCIC, Turbo charged water cooled, developing 101 HP@ 2400 rpm or equivalent engine

Transmission

- VECV make ET6055 Synchronesh gear box
- Auxiliary gear box for high & low range

Clutch

- Single, dry type friction clutch plate

Brakes

- Dual circuit brakes
- Fully air operated brakes on front wheels and pneumatically assisted hydraulic brakes on rear wheel

- Parking:** Air operated, spring actuated fail safe brakes on front wheel

Tyres

- 8 Nos. 12-24, 20 PLY

Hydraulic System

- Main Pump Tandem Hydraulic vane Pump
- Control Valve Main control valve 3 spool double acting with built in relief valve & auxiliary valve
- Outrigger Control valve 2 Spool double acting type

Steering

- Full power orbitrol with twin hydraulic double acting rams, 40° articulation on either side

Boom

- 4 part boom, 3 part hydraulically powered & fully synchronised
- 4th part power extended and manually pinned for safety

Hoist

- 15 T Hydraulically operated winch with 6 falls snatch block
- Built in safety brakes

Wheel Base

- 4.88 m

Dimensions

- Overall length 10.9 m

- Overall width 2.7 m
- Overall height 3.3 m

Operating Weight

- 18565 kg

Wheel Track

- Front 1.96 m
- Rear 1.96 m

Turning Radius

- 7.85 m

Electrical System

- 24V, DC

Standard Accessories

- All weather cabin with unrestricted visibility
- Rear View camera with LCD
- Equipment monitoring system (telematics)
- Front outriggers
- Wheel guards
- FM radio and mobile charger

Optional Accessories

- Safe load indicator with hydraulic cut off
- Spare wheel
- Air conditioned cabin
- RHINO hook
- Man carrying basket
- Fire extinguisher

FEATURES



India's first front wheel drive crane. 6 fall snatch block & heavy duty hook for precision handling.



Rugged front axle for guaranteed best traction during crane operation.



Front outrigger with rectangular outer box for better load lifting, stability & safety. Front working light for better vision.



Features

- First Crane with front wheel drive to ensure excellent traction
- 15T load lifting through snatch block
- Telematics as standard fitment
- Boom Height - 19.5 m
- Travel Speed of 38 km/hr - idle for road running
- High Ground Clearance
- Creep Speed 1.3 km/hr
- Reverse Camera & Wheel Guard
- FM Radio & Mobile Charger in Cabin
- Maintenance free articulation bearings