

## SPECIFICATIONS HYDRA NXT 13

### RATED CAPACITY

13T @1.5m radius 2.0T @8.2m radius

### ENGINE

Escorts AE 4.312C-3A Four Cylinder, Water Cooled Diesel Engine, developing 49.5 HP @2200 RPM or equivalent

### TRANSMISSION

**Drive-** 2 Wheel Drive

**Type-** Heavy duty transmission developed especially for crane application. Constant mesh gearbox coupled with robust straight drive axle. 08 forward & 02 reverse speeds with high/low selector lever

**Max. Speed-** 29 km/hr (unladen)

**Clutch-** Single plate, Heavy duty type

### STEERING

**Type-** Articulated power steering, hydraulically controlled through two double acting jacks

**Articulation-** up to 45° **Turning radius-** 6.3 m

### HOIST MECHANISM

**Hoist-** Hydraulic winch, Four falls, Rope dia 13 mm

### BRAKES

**Front Wheel-** Pneumatic assisted hydraulic brake

**Rear Wheel-** Disc brakes actuated through a slave cylinder

**Parking-** Hand operated mechanically actuated at rear wheels

### HYDRAULIC SYSTEM

**Pump-** Vane type Hydraulic Pump

**Control Valve-** 4 spool control valve with built in pressure relief valve and precision control

**Hydraulic Filter-** Suction line has a 100 mesh inline strainer while return line has 25 microns full flow filter

### ELECTRICAL SYSTEM

**Type-** 12V Single Battery, Negative earth

### CAPACITIES

**Fuel Tank-** 90 ltr. **Hydraulic Tank-** 90 ltr.

### TRACK

**Front-** 1930 mm **Rear-** 1680 mm

### OVERALL DIMENSIONS

**Length-** 10300 mm **Width-** 2550 mm

**Height-** 2850 mm

### OPERATIONAL WEIGHT

11800 kg

### BOOM

**Telescoping-** 3 part hydraulically powered & fully synchronized

**Derricking-** Through double acting jacks

### TYRES

**Front-** 10.00 x 20- 16PR (4 Nos.), inflation pressure 110-115 PSI

**Rear-** 13.00 x 24- 16PR (2 Nos.), inflation pressure 35 PSI (Water Ballasted)

### SAFETY DEVICES

Safety brake on hoist

Rope compensation for auto levelling

Counter balance protection valve in the lift line against hose burst

Visual warning against parking brakes on

### STANDARD ACCESSORIES

All weather cabin Rear view mirror

Front bumper Turn & reverse lamp

Reflectors

### OPTIONAL ACCESSORIES

Fly jib Over hoist & hydraulic cut off kit

Steering wheel Air brakes on front wheel

Fire extinguisher Spark arrestor

Safe load indicator 14 x 24 heavy duty tyres

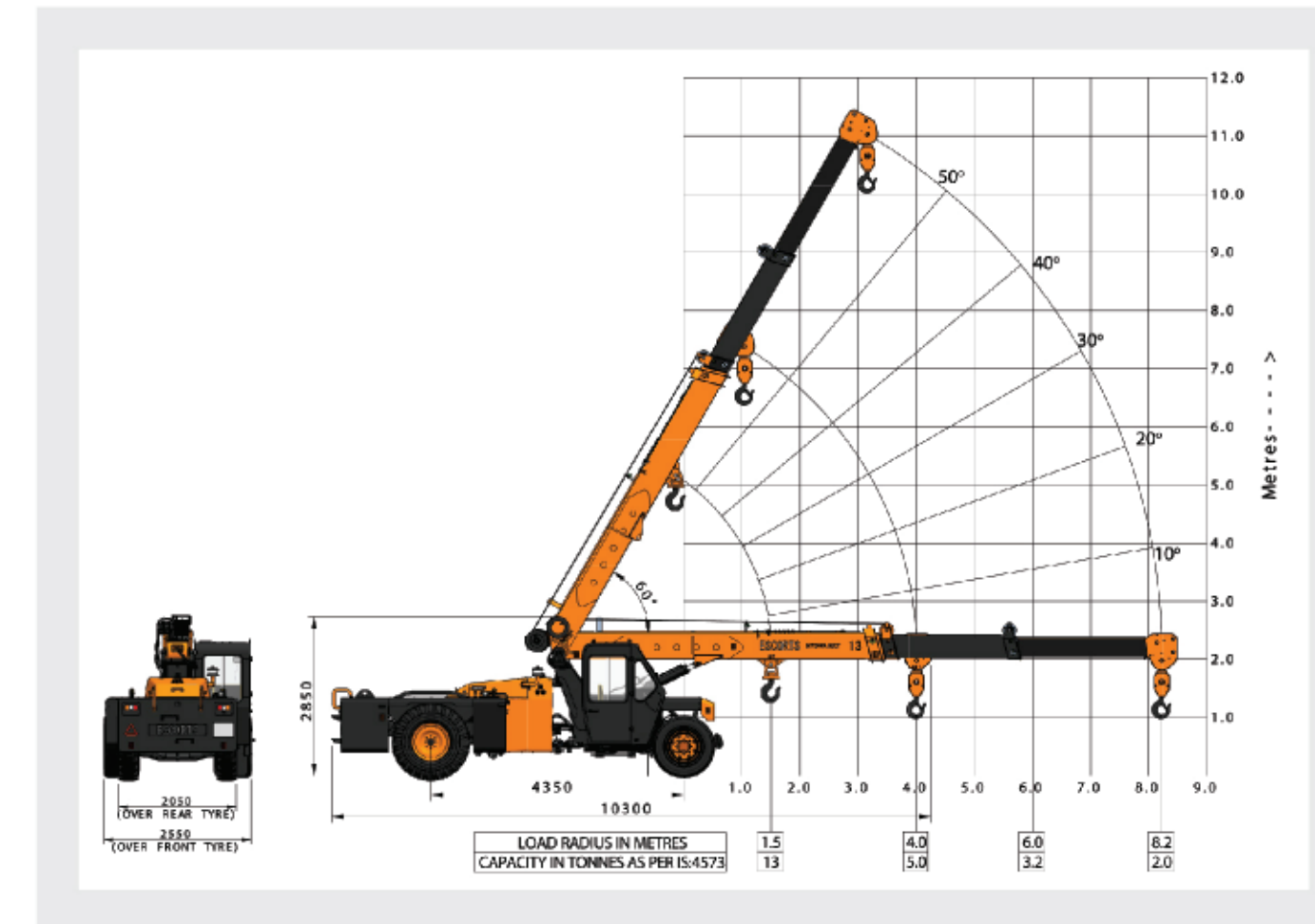
Mobile charger Beacon light

Cabin fan Telematic & stereo system

Reverse parking system Front outrigger

# HYDRA NXT 13

## Load Chart



Rated loads are calculated for operation on leveled surface.

# HYDRA NXT 13

## The Next Gen Hydra



Better maneuverability - low turning radius

High stability under articulation

Additional deck for utility

Front mounted cabin for better visibility

500 hours service interval

Heavy duty backend

Rope compensation

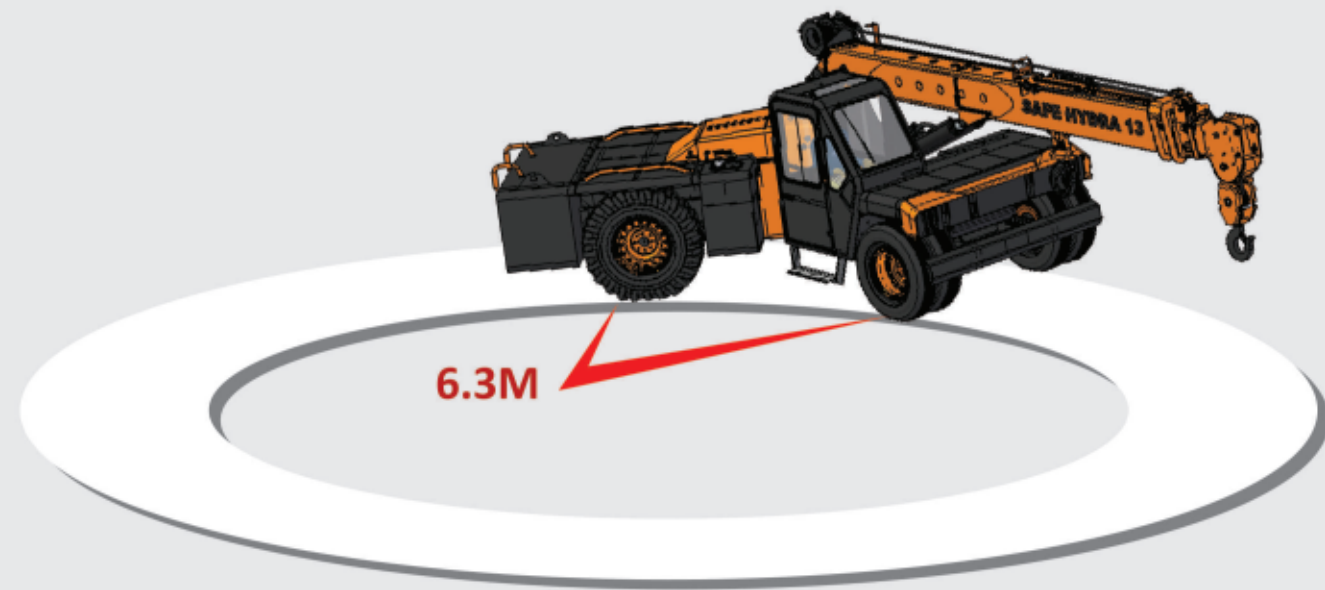


Escorts Construction Equipment: Plot No.- 219, Sector-58, Ballabhgarh- 121 044, Distt.- Faridabad, Haryana (INDIA)  
Tel.- 0129- 2306574/2306598/2306571 Fax- 0129- 2306572  
Toll Free No.- 1800- 180- 4488 (Timing: 9.30 am - 6.00 pm, Monday to Friday)  
E-mail- ece.marketing@escorts.co.in Website- www.escortsgroup.com

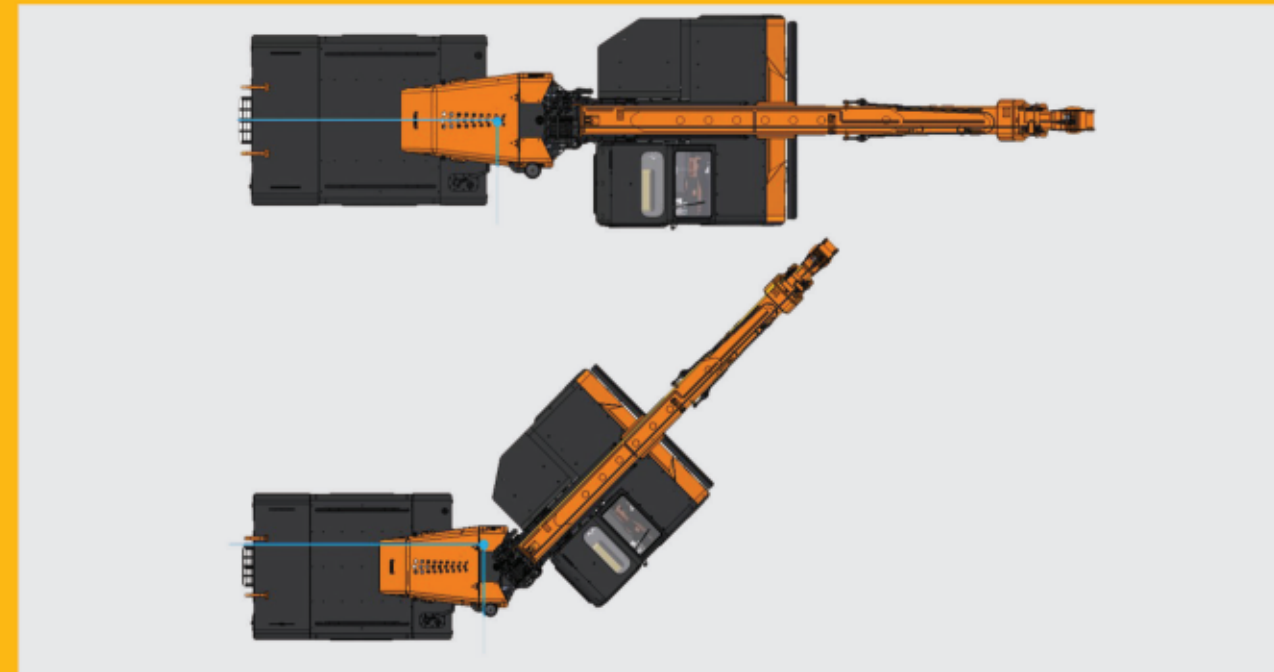
Accessories as shown in the picture may not be the part of standard fitment and are subject to change without prior notice.

Hub/Dec 2018





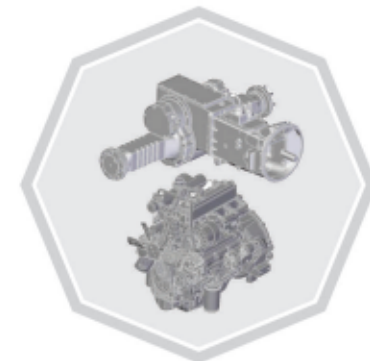
**Better Maneuverability**  
Low turning radius



**Stability of Crane under articulation**



**Hydraulic Winch of 10T**  
Capacity with 4 fall snatch block for precision handling & low maintenance



**Escorts Engine & Backend**



**High Utility**  
Additional Deck for utility



**Front Mounted Cabin**  
Front cabin for better visibility & control of loads. Line of sight is always aligned with load even in articulation



**3P Boom & Rope**  
Compensation for precision handling & auto levelling of loads