

Reaching Further Higher



**ESCORTS  
CONSTRUCTION EQUIPMENT**

**NEW**

**HYDRA 13**

**13T Pick-n-Carry**

**Heavy duty & reliable clutch**

**Low maintenance cost**

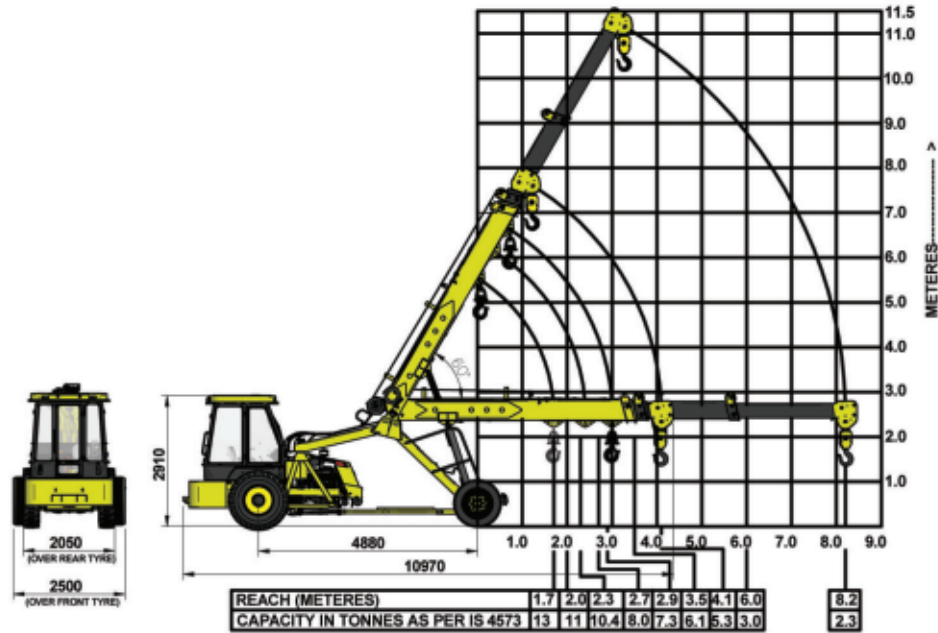
**Robust structure**

**Fuel efficient**



# NEW

## LOAD CHART HYDRA 13



Rated loads are calculated for operation on levelled surface.

## SPECIFICATIONS

### RATED CAPACITY

- ▶▶ 13T @ 1.7m radius
- ▶▶ 2.3T @ 8.2m radius

### ENGINE

- ▶▶ Escorts AE 4.312C-3A Four Cylinder, Water Cooled Diesel Engine, developing 49.5 HP @ 2200 RPM or equivalent

### TRANSMISSION

- ▶▶ **Drive**- 2 Wheel Drive
- ▶▶ **Type**- Heavy duty transmission developed especially for crane application. Constant mesh gearbox coupled with robust straight drive axle. 08 forward & 02 reverse speeds with High/Low selector lever
- ▶▶ **Max. Speed**- 29 km/hr (unladen)
- ▶▶ **Clutch**- Heavy duty clutch, Wire woven, Asbestos free

### STEERING

- ▶▶ **Type**- Articulated power steering, hydraulically controlled through two double acting jacks
- ▶▶ **Articulation**- up to 55°
- ▶▶ **Turning radius**- 6.5 m

### HOIST MECHANISM

- ▶▶ **Hoist**- Hydraulic Winch, Four falls, Rope dia 13 mm

### BRAKES

- ▶▶ **Front Wheel**- Pneumatic assisted hydraulic brakes
- ▶▶ **Rear Wheel**- Disc brakes actuated through a slave cylinder
- ▶▶ **Parking**- Hand operated mechanically actuated at rear wheels

### HYDRAULIC SYSTEM

- ▶▶ **Pump**- Vane type Hydraulic Pump
- ▶▶ **Control Valve**- 4 spool control valve with built in pressure relief valve and precision control
- ▶▶ **Hydraulic Filter**- Suction line has a 100 mesh inline strainer while return line has 25 microns full flow filter

### ELECTRICAL SYSTEM

- ▶▶ **Type**- 12V Single Battery, Negative earth

### CAPACITIES

- ▶▶ **Fuel Tank**- 45 ltr.
- ▶▶ **Hydraulic Tank**- 65 ltr.

### TRACK

- ▶▶ **Front**- 1930 mm
- ▶▶ **Rear**- 1680 mm

### OVERALL DIMENSIONS

- ▶▶ **Length**- 10970 mm
- ▶▶ **Width**- 2550 mm
- ▶▶ **Height**- 3100 mm

### OPERATIONAL WEIGHT

- ▶▶ 10600 kg

### BOOM

- ▶▶ **Telescoping**- 3 part hydraulically powered through 2 nos. of extension jacks
- ▶▶ **Derricking**- Through double acting jacks

### TYRES

- ▶▶ **Front**- 10.00x20-16PR (4 Nos.), inflation pressure 110-115 PSI
- ▶▶ **Rear**- 13.00x24-12PR (2 Nos.), inflation pressure 35 PSI (Water Ballasted)

### SAFETY DEVICES

- ▶▶ Overload audio warning system
- ▶▶ Safety brake on hoist
- ▶▶ Cylinder guard for protection
- ▶▶ Over hoist safety switch
- ▶▶ Counter balance protection valve in the lift line against hose burst
- ▶▶ Visual warning against parking brakes on

### STANDARD ACCESSORIES

- ▶▶ All weather cabin
- ▶▶ Front bumper
- ▶▶ Reflectors
- ▶▶ Lift cylinder guard
- ▶▶ Rear view mirror
- ▶▶ Turn & reverse lamp

### OPTIONAL ACCESSORIES

- ▶▶ Fly Jib
- ▶▶ Steering Wheel
- ▶▶ Fire Extinguisher
- ▶▶ Safe Load Indicator
- ▶▶ Hydraulic Cut off Kit
- ▶▶ Air Brakes on Front Wheel
- ▶▶ Spark Arrestor
- ▶▶ 14 x 24 Heavy Duty Tyres



Escorts Construction Equipment: Plot No.- 219, Sector-58, Ballabhgarh-121 004,  
Distt.- Faridabad, Haryana (INDIA) T.: 0129- 2306574/2306598/2306571 F.: 0129- 2306572  
E.: ece.marketing@escorts.co.in W.: www.escortsgroup.com

**Toll Free No.- 1800- 180- 4488**

(Timings: 9.30 am - 6.00 pm, Monday to Friday)

Accessories as shown in the picture may not be the part of standard fitment and are subject to change without prior notice.

Hub/Dec 2018

The information contained in this leaflet is intended to be of general nature only. We reserve the right to change specifications without notice. All dimensions and weight are variable within ± 5%.