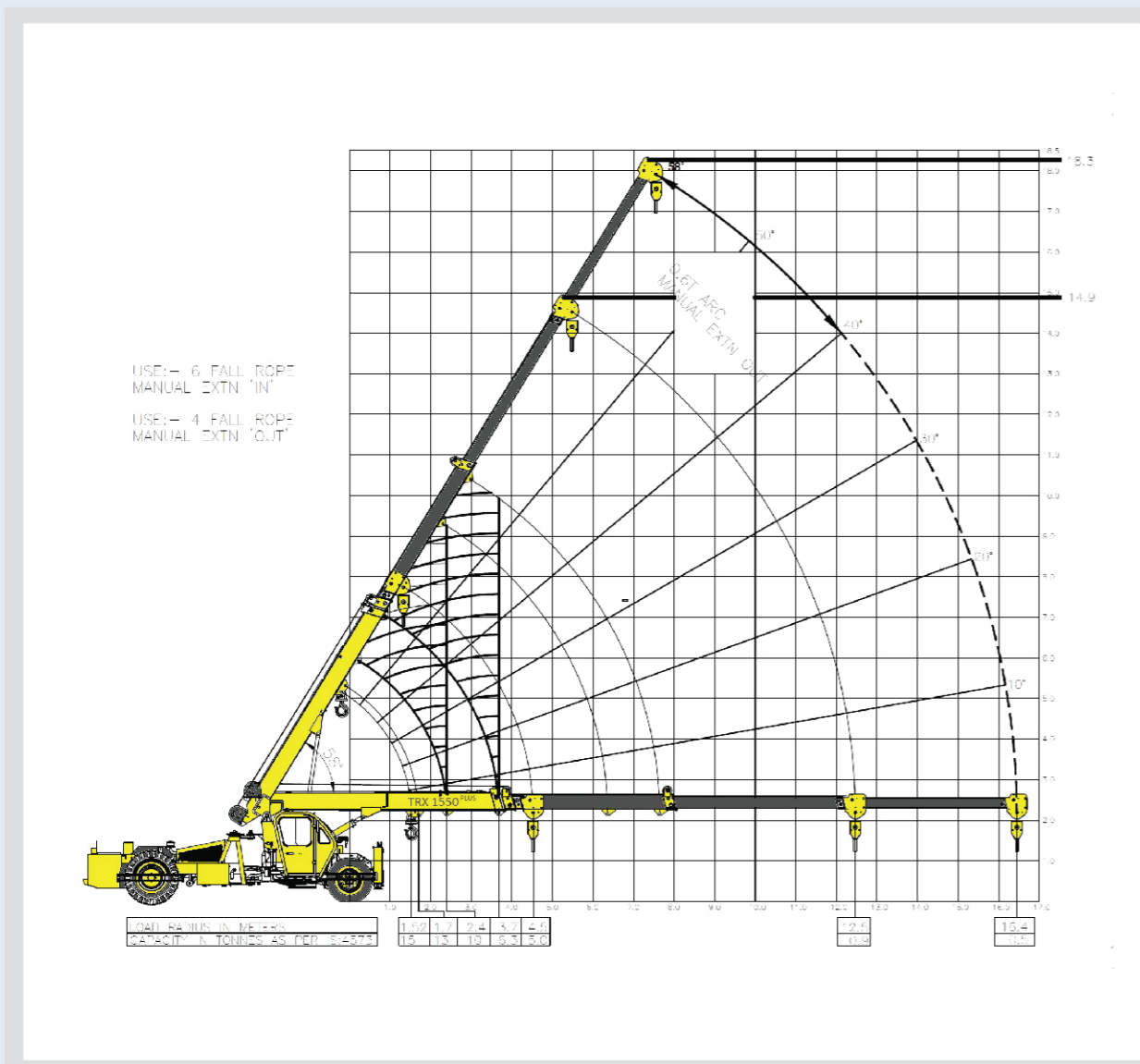


TRX-1550 Plus



TRX-1550 Plus Load Chart



Rated loads are calculated for operation on levelled surface

The information contained in this folder is intended to be of general nature only. We reserve the right to change specifications without notice. All dimensions and weight are variable within +/- 5%.



- Low front overhang
- High boom height
- High strength boom material
- 95 bore escorts engine with 500 hrs Service interval



Escorts Construction Equipment: Plot No.- 219, Sector-58,
Ballabhgarh- 121 044, Distt.- Faridabad, Haryana (INDIA)
Tel.- 0129- 2306574/2306598/2306571 Fax- 0129- 2306572
Toll Free No.- 1800- 180- 4488 (Timing: 9.30 am - 6.00 pm, Monday to Friday)
E-mail- ece.marketing@escorts.co.in Website- www.escortsgroup.com

Accessories as shown in the pictures may not be the part of standard fitment and are subject to change without prior notice.

Hub/Dec 2018

Specification

Rated Capacity

(as per IS 4573) 15 T @ 1.52 m radius
0.9 T @ 12.4 m radius

Engine

Make & Model Escorts AE 4.312C-3A Four Cylinder, Water Cooled Diesel Engine developing 49.5 HP @ 2200 RPM or equivalent

Transmission

Drive 2 Wheel drive
Type Heavy Duty, Constant Mesh, Helical Teeth Gearbox coupled with straight drive axle
Speeds 8 Forward & 2 Reverse speeds with High / Low Selector
Creep Speed 2 km/hr under laden condition, ideal for crane operation (with load)
Clutch Single Plate, Heavy Duty type

Steering

Type Power Steering, Articulated, hydraulically controlled, actuated by Steering Wheel
Articulation 45° on either side

Brakes

Front Wheel Fully Pneumatic brakes on front wheels
Rear Wheel Disc brakes actuated through a slave cylinder
Parking Pneumatic operated, foil safe type applicable on front wheels

Tyres

Front 11.00 X 20 - 16 PR (4 nos.), inflation pressure 110 - 115 PSI
Rear 14.00 X 24 - 16 PR (2 nos.), inflation pressure 58 PSI. Water Ballasted

Track

Front 1930 mm (Center of twin wheels)
Rear 1680 mm (Center of wheels)
Turning Radius 6.8 m

Boom

Luffing Angle Zero to 58.5°
Telescoping 4 part, 3 part hydraulically powered & fully synchronized, 4th part power extended & manually pinned
Type Slotted Boom with Rope compensation
Derricking Through double acting jacks

Hoist Mechanism

Hoist Hydraulic winch. Six falls (Winch capacity 12 T)
Rope dia 13 mm

Hydraulic System

Pump Vane type hydraulic pump
Control Valve Control valve with built in pressure relief valve for precision control
Hydraulic Filter Suction line has a 100 mesh inline strainer while return line has 25 microns full flow filter

Electrical System

Type 12V Single battery, Negative earth

Capacities

Fuel tank 90 Ltrs.
Hydraulic tank 90 Ltrs.

Operating Weight (Kg)

Gross Vehicle Standard M/C 13485 kg
Weight With Outriggers 14065 kg

Overall Dimensions

Length 12100 mm
Width 2550 mm
Height 2780 mm

Safety System

Rear View Camera with LCD Display
Wheel guard
Rope Compensation for auto levelling
Safety brakes on hoist
Hose protection failure device
Front Mounted Cabin

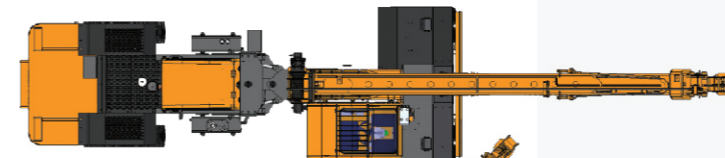
Standard Accessories

All Weather Cabin
Steering Wheel
Front Bumper
Reflector
Rear View Mirror
Rear Camera with LCD Display
Wheel Guards in the front & rear

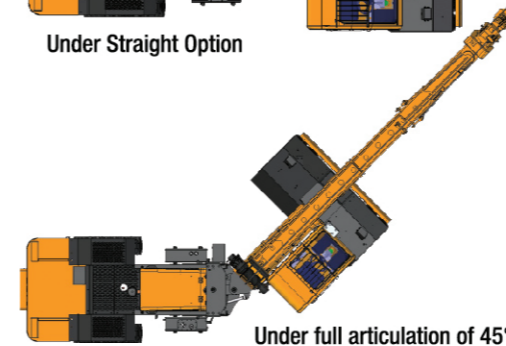
Optional Accessories

Fly Jib
Air Conditioned Cabin
Safe Load Indicator with hydraulic cut off
Front Outriggers
Fire Extinguisher
Beacon Light
Helper Seat

Features



Under Straight Option



Under full articulation of 45°



Rear View Camera

Rear view Camera with LCD display in cabin, ensures complete rear view increasing safety.



Slotted Boom

Slotted Boom with Rope Compensation for auto levelling of load and precision handling.

Stability of Crane Under Articulation

The Centre of Gravity is low and falls within the dimensions even under articulation.



Front Mounted Cabin

Front cabin for better visibility & control of loads. Line of sight is always aligned with load even in articulation.



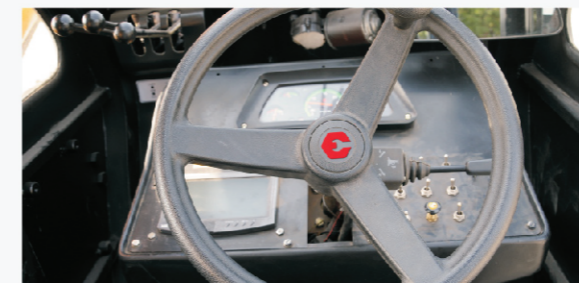
Out Riggers

Front Outriggers (optional) prosted for additional safety while on erection jobs.



Visibility

Operator's visibility is optimum from the cabin for better controls.



Steering Wheel

Articulated power steering controlled through steering wheel for safe usage and precision.



Tyre Guard

Tyre Guard option for enhanced safety for operation crew.



SLI

Safe Load indicator with features like 1 hook/ 3 hooks calibrations & fail safe operations with cut off.

Notes:

- Max Lifting Capacity : 15 T
- Max Boom Height : 18.3 m with 4 Part Boom
- Max Horizontal Reach : 12.4 m
- 15 T can be lifted to a height of 5.4 m
- 13 T can be lifted to a height of 5.4 m
- 10 T can be lifted to a height of 9.3 m through winch/ 8 m through slotted boom
- 6.3 T can be lifted to a height of 12.5 m through winch/ 9.3 m through slotted boom
- 4.3 T can be lifted to a height of 15 m through winch
- Tyres to be inflated with recommended air pressure
- Lifting Capacity is as per IS: 4573 - 1982 on a firm and level ground
- Weights of chains, slings & tackles to be considered extra